

Armstrong Manor Farm

Philip Armstrong



Farm Overview

- Partnership: Philip, Peter, Richard and Shirley
- 300 milking cows + 250 replacements
- Three times a day milking
 - 39 - 41 kg of milk at 4.4% BF and 3.5% Protein
- Farm 1,500 acres (own 100)
 - Grow corn, wheat, hay, soybeans
- Three full time employees
- Five part time employees

Reproduction

- Started using sexed semen five years ago
- Heifers only – First three breedings
- Big increase in heifer population
- New quota policy halted quick herd expansion



Improve Herd Quality

- Cull bottom 25-30% of heifers before bred
- How do we know which ones to cull?
 - Parental averages and indexes
 - East Gen reps aided in visual selection

Genomics

- Started testing heifers four years ago
 - 67% reliability
 - Genetic indexes 35% accurate
- Nasal swab as young calves, sent away with registration papers



ROMBOUTS

Farm Repair & Hydraulic Services

Urban Automatic Feed

GENOTEST

A joint program between Holstein Canada and Semex Partners
Un programme conjoint de Holstein Canada
et des partenaires de L'Alliance Semex

A clean nostril provides the best DNA sample. However, traces of dirt or feed in the nostrils are acceptable.

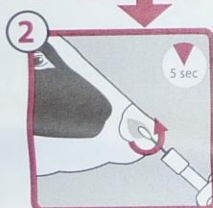
Ensure the collection sponge does not touch anything other than the animal's nostril to prevent contamination of sample.

Une narine propre fournit le meilleur échantillon d'ADN. Cependant, des traces de saleté ou de nourriture à l'intérieur des narines sont acceptables.

Assurez-vous que l'éponge de collection ne touche rien d'autre que la narine de l'animal pour empêcher la contamination de l'échantillon.

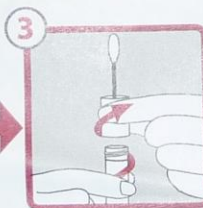
1

Cow name / Nom de la vache :	Prefix of submitter / Préfixe du demandeur :
Registration No. / N° d'enregistrement :	Phone No. / N° de tél. :
Herd Management No. / N° de régie interne :	Signature :
DNA test / Test de l'ADN : <input type="checkbox"/> 3 K <input type="checkbox"/> 50 K <input type="checkbox"/> Other / Autre :	



For Animal Use Only /
Pour l'utilisation des
animaux seulement

Mail to / Veuillez poster à :
Holstein Canada
c/o Genomic Testing
Testage génomique
P.O. Box 610
Brantford, ON N3T 5R4



**ATTENTION: Collection tube contains liquid. DO NOT SPILL.
Cette éprouvette contient du liquide. NE LE RENVÉRSEZ PAS.**

Use at / utiliser à 15°C - 30°C
See MSDS at / Consulter la fiche signalétique
sur le site www.dnagenotek.com
U.S. Patent No. / Brevet américain n° 7,482,116,
European Patent No. / Brevet européen n° 1 513 952
and patent pending / et brevet en instance; ©

Manufactured for Holstein Canada by /
Fait pour Holstein Canada par
DNA Genotek Inc., Ottawa, ON
www.dnagenotek.com
Made in Canada / Fabriqué au Canada



PERFORMAGENE LIVESTOCK
For DNA Collection
PG-100.002



Genomics Continued

- Started Culling heifers only on genomic LPI
- Some exceptions...
- Fewer low LPI heifers to cull in the last 6 months
 - Culling is now made on genomic confirmation and LPI

Thank You

